

Project Fact Sheet

Project Description

Girard WWTF Peak Flow Treatment and Equalization Project

The Girard Wastewater Treatment Facility (WWTF) located just north of US 422 at Little Squaw Creek and operates under an Ohio Environmental Protection Agency (OEPA) administered National Pollution Discharge System (NPDES) Permit No. 3PD00010*ND. The permit that became effective on August 1, 2012 contained a “Schedule of Compliance” that imposed specific requirements on the City of Girard as conditions for receiving the permit to discharge effluent to the waters of the State of Ohio. The NPDES permit included this “Schedule of Compliance” and the requirements for the development of a “**No Feasible Alternative Analysis Report**” or **NFA** and a schedule for implementation of the “most feasible” and recommended plan to “eliminate” plant bypasses and system overflows.

In the 31-month period from January 2011 through July 2013 the Girard WWTF experienced 59 in-plant secondary treatment bypass events averaging 1.3 million gallons each or a total of approximately 77 million gallons of partially treated wastewater that was discharged to the Little Squaw Creek. During this same time period the city’s only combined sewer overflow (CSO) experienced 7 events that averaged 640,000 gallons of raw wastewater/storm water being discharged directly to the Little Squaw Creek. This overflow volume totaled approximately 4.48 million gallons.

This project known as the “**Girard WWTF Peak Flow Treatment and Equalization Improvement Project**” is the result of several years of planning and preliminary and final detailed plan design so that when it is constructed it will eliminate the in-plant bypasses and greatly reduce CSO events. The recommended plan from the final approved NFA was **Alternative No. 3**. This plan includes the “base improvement plan” (**Alternative No.1**) of existing plant optimization and upgrade improvements, the addition of a third set of secondary treatment process units (one new trickling filter and one new final settling tank) to parallel the existing units and 2.4 million gallons of additional flow equalization or temporary on-site storage volume. This improvement plan will increase the “peak flow treatment capacity” of the Girard WWTF to 12.0 mgd, but will not increase the “average daily flow capacity” of 5.0 mgd (million gallons per day). The recommended plan also addresses the enhanced treatment of potential bypass flows at the Girard WWTF and specific improvements to the combined sewer collection system to reduce the frequency and volume of the CSO events.

The NFA report was submitted to OEPA for review and approval in October of 2014. Comments and recommended additions to the plan were made by OEPA. These changes were added to the plan to comply and obtain OEPA approval and low interest funding through the Water Pollution Control Loan Fund. The detailed design plan preparation and bidding was authorized by Girard City Council in April of 2016. The estimated construction cost for the plant improvements as of the construction loan application and bidding of the project in October 2017 is \$16,100,000. The project cost, including engineering, land acquisition, administrative

cost, contingencies and fees is \$ \$20,800,000. This is the estimated construction loan value, which includes loan fees and capitalized interest during construction. The details and cost estimate of the Final Approved Recommended Plan can be as found in “Final Basis of Design Report”, which is posted on the City of Girard web site under the “Girard Wastewater Facility Improvement Project Access Tab.

Project Costs and Financial Effects

The estimated project total annual total debt service for the project is \$679,000 based on a weighted interest rate of 0.31% for 30-years. The first \$13,000,000 of the total loan value will be at 0% interest for thirty years and the balance will be at 1.0% for thirty years. This results in a weighted interest rate of 0.31 % for the thirty-year finance period. This annual cost will be supported by revenue from the Girard and Trumbull County Service Area rate payers who contribute flow to the improved Girard WWTF. The ratio of the final capital cost sharing will be based on flow treatment capacity shared with Trumbull County and the particular type of improvements and renovations made at the WWTF. At the time of bidding the assumed split will be approximately 30% County and 70% Girard. The necessary sewer rate increases for the city of Girard rate payers have been implemented over the last several years.

Implementation Schedule

The Girard WWTF Peak Flow Treatment and Equalization Improvement Project entered the final bidding and construction phase as of late October 2017. Bids for the construction of the improvements are scheduled to be received on December 14, 2017. It is anticipated that actual construction will begin in February of 2018 and be completed in 24 months.

Summary of Expected Construction & Environmental Impacts

In general, minimal impacts and disturbance of the city’s project area are expected during the 24-month construction period. This conclusion was reached primarily because the project area is either previously disturbed land or located on the existing plant site. Only a few trees or other significant environmental attributes will be adversely affected by this project. Local Girard and Liberty Township residents should expect limited impacts on their day-to-day activities, including temporary disruptions of traffic in the project areas and minor soil erosion and sedimentation due to construction activities. These typical construction impacts will be addressed by the mitigative measures that have been provided in detailed plans and specifications for this project. Disposal of excavated material in floodplains or wetlands will be specifically prohibited.

Land north of the plant all the way to Interstate 80, is being placed in a permanent land conservation park with public access. This land represents some of the last unspoiled stream waterway and riparian habitat in the city. The park has been named the “Little Squaw Creek Conservation Park.” The land purchase is being partially funded with a Clean Ohio Conservation Grant.

Of the 36 acres of land obtained for the Project and the Conservation Park approximately 6 acres has been annexed to the existing WWTF property for use as shown on the figures below. The remaining 30 acres will be permanently dedicated to a conservation park to eventually be developed with hiking trails and protected open space.

Design features of this park are in accordance with and in fulfillment of the goals of the “US-422 Corridor Redevelopment Plan” and will eventually serve to connect the existing Liberty Park with Girard neighborhoods. While not a specific part of the WWTF project the conservation park land is an environmental asset to the City.

Comments

If you have comments on any of the information in this fact sheet, please use the form attached to this Fact Sheet. Thank you for your time and interest in this important project.

List of FIGURES (Pages 4-7)

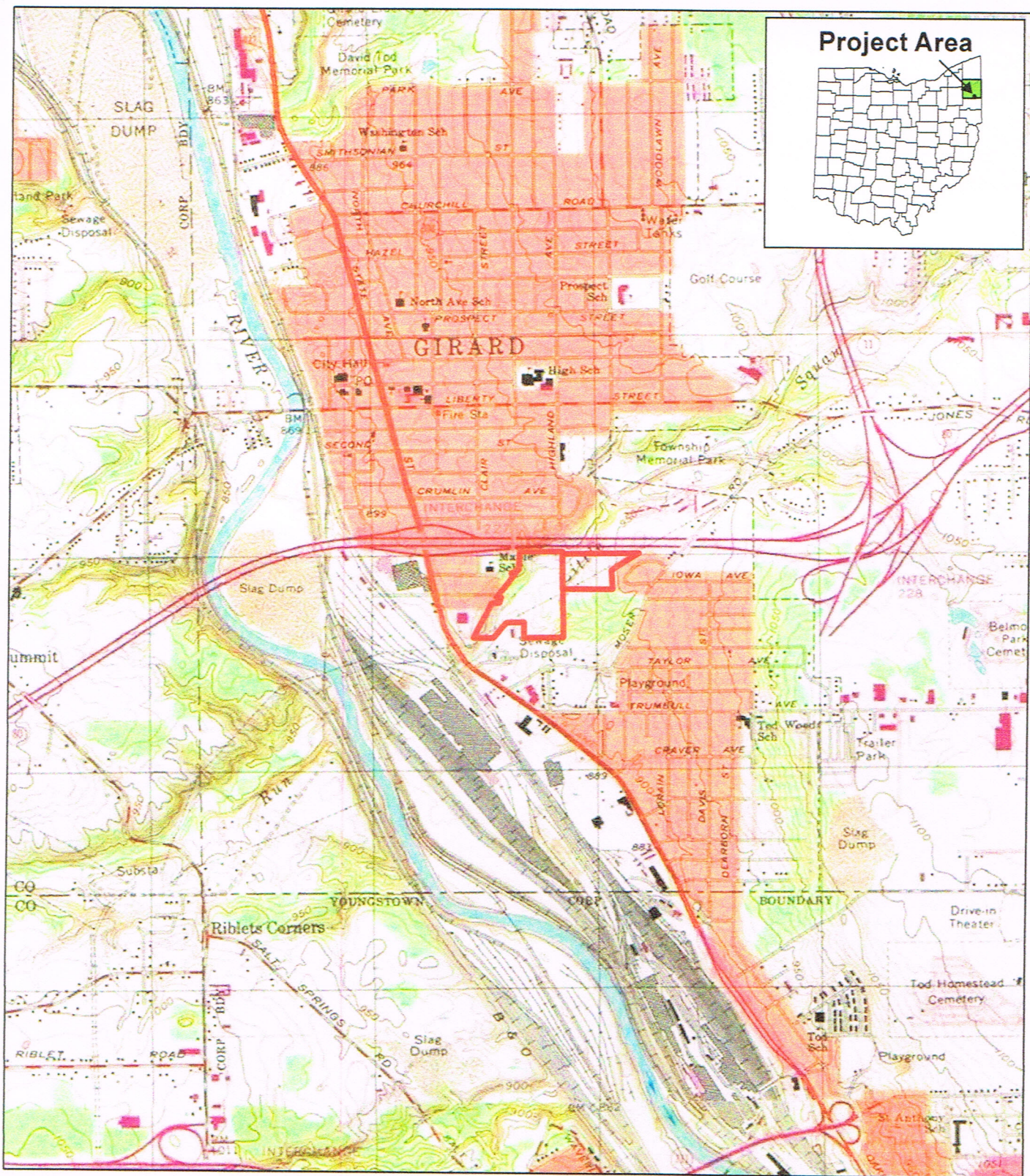
Figure 1: Project Location- US 422 At Little Squaw Creek

Figure 2: Exhibit 1 - Oljaca Property Preliminary Site Plan

Figure 3: Figure 7-1 Recommended Improvement at WWTF General Site Plan

Figure 4: Attachment A – Little Squaw Creek Conservation Park Conceptual Plan

Response Form (Page 8)



 Project Area

Project Location Map

City of Girard
 Oljaca Property, Parcels A and B
 Girard, Trumbull County, Ohio



0 500 1,000 2,000 Feet



Figure 1

Source: USGS Topographic 7.5 Minute
 Girard, OH Quadrangle

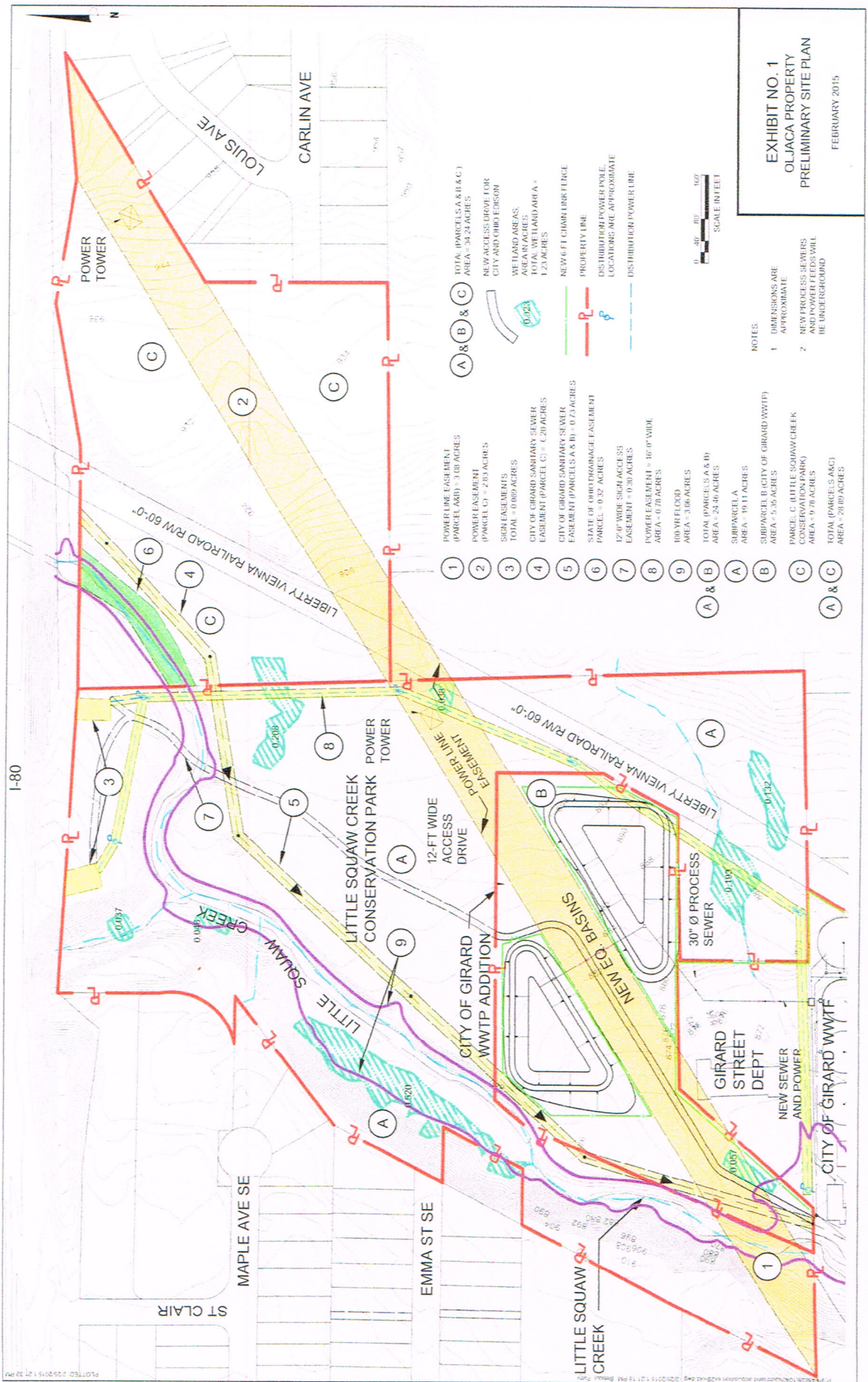


FIGURE 2

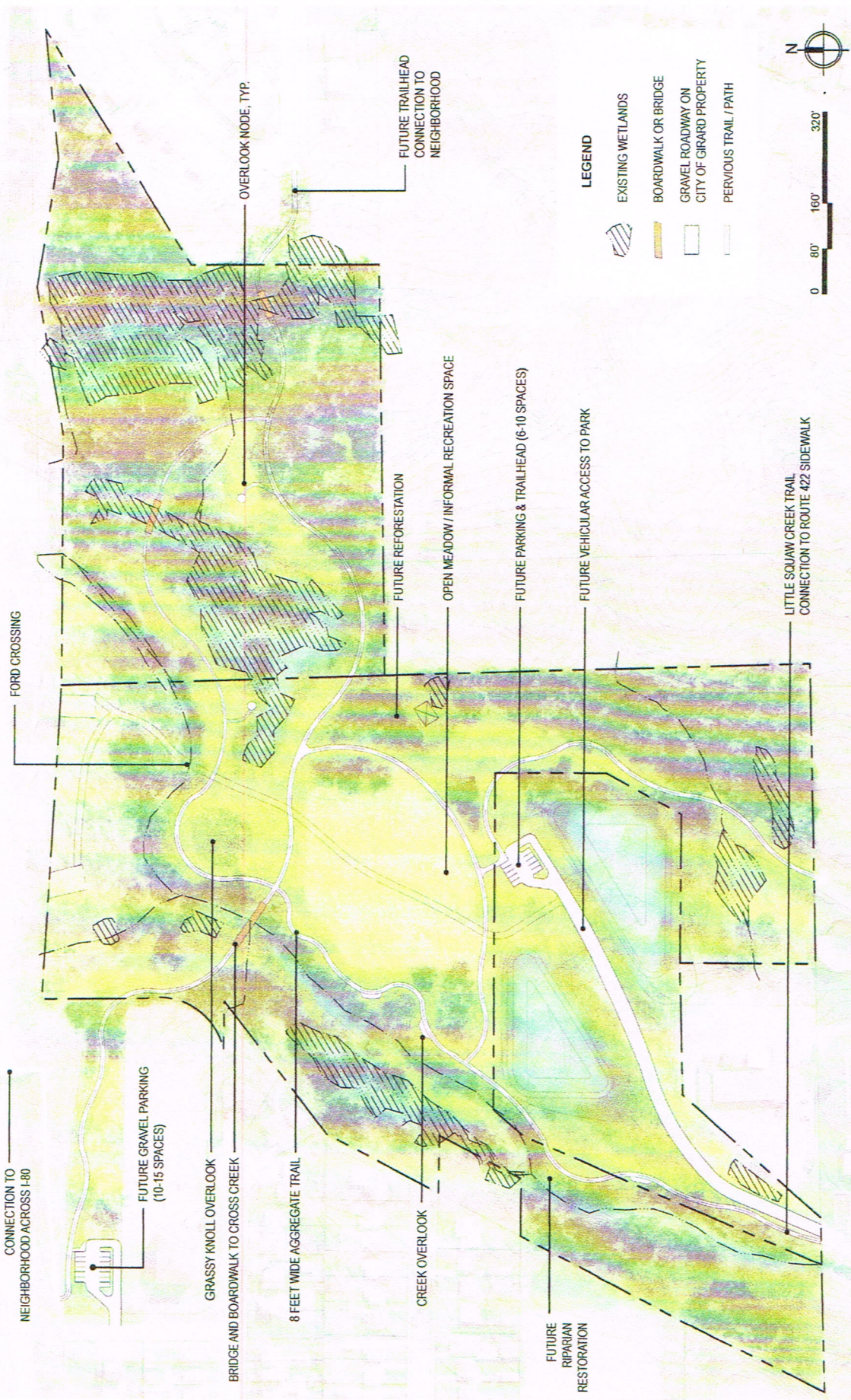


FIGURE 4

ATTACHMENT A - LITTLE SQUAW CREEK CONSERVATION PARK (CONCEPTUAL PLAN)

